



**SAMPLE INFORMATION**

**Sampler:** C. Parker

**Date:** 06/06/2022

**Site:** Bolton Branch (East)

**Time:** 11:30

**Sample No.:** BBE-1

**Latitude:** 30.6449

**Flow:** Yes

**Longitude:** -88.1025

**FIELD PARAMETERS**

**Conductivity:** 173  $\mu$ S/cm

**Dissolved Oxygen:** 5.04 mg/L

**pH:** 6.68

**Turbidity:** 2 NTU

**Temperature:** 28.1 °C

**Comments:**

**LABORATORY PARAMETERS**

**Enterococci:**

**E. Coli:** Yes

**CBOD:**

**Fecal Coliform:** Yes

**NBOD:**

**TSS:**

**Total Phosporus:**

**PHOTOGRAPHS**





**SAMPLE INFORMATION**

**Sampler:** C. Parker

**Date:** 06/06/2022

**Site:** Threemile Creek

**Time:** 10:55

**Sample No.:** TMC-1

**Latitude:** 30.6966

**Flow:** Yes

**Longitude:** -88.088

**FIELD PARAMETERS**

**Conductivity:** 122  $\mu$ S/cm

**Dissolved Oxygen:** 6.2 mg/L

**pH:** 6.47

**Turbidity:** 6 NTU

**Temperature:** 28.8 °C

**Comments:**

**LABORATORY PARAMETERS**

**Enterococci:** Yes

**E. Coli:**

**CBOD:** Yes

**Fecal Coliform:**

**NBOD:** Yes

**TSS:**

**Total Phosporus:**

**PHOTOGRAPHS**





**SAMPLE INFORMATION**

**Sampler:** C. Parker

**Date:** 06/06/2022

**Site:** Toulmins Spring Branch

**Time:** 09:40

**Sample No.:** TSB-1

**Latitude:** 30.7217

**Flow:** Yes

**Longitude:** -88.0806

**FIELD PARAMETERS**

**Conductivity:** 232  $\mu$ S/cm

**Dissolved Oxygen:** 1.54 mg/L

**pH:** 6.48

**Turbidity:** 3 NTU

**Temperature:** 24.9 °C

**Comments:** Bridge replacement project ongoing at sample site

**LABORATORY PARAMETERS**

**Enterococci:**

**E. Coli:** Yes

**CBOD:**

**Fecal Coliform:** Yes

**NBOD:**

**TSS:**

**Total Phosporus:** Yes

**PHOTOGRAPHS**





**SAMPLE INFORMATION**

**Sampler:** C. Parker

**Date:** 06/06/2022

**Site:** UT to Three Mile Creek

**Time:** 10:25

**Sample No.:** UTMC-1

**Latitude:** 30.6962

**Flow:** Yes

**Longitude:** -88.0776

**FIELD PARAMETERS**

**Conductivity:** 465  $\mu$ S/cm

**Dissolved Oxygen:** mg/L

**pH:** 8.87

**Turbidity:** 4 NTU

**Temperature:** 28.9 °C

**Comments:** D.O. was OR

**LABORATORY PARAMETERS**

**Enterococci:**

**E. Coli:** Yes

**CBOD:**

**Fecal Coliform:** Yes

**NBOD:**

**TSS:**

**Total Phosporus:** Yes

**PHOTOGRAPHS**







**SAMPLE INFORMATION**

**Sampler:** C. Parker

**Date:** 06/13/2022

**Site:** Bolton Branch (West)

**Time:** 09:40

**Sample No.:** BBW-1

**Latitude:** 30.6271

**Flow:** Yes

**Longitude:** -88.1363

**FIELD PARAMETERS**

**Conductivity:** 135  $\mu$ S/cm

**Dissolved Oxygen:** 4.65 mg/L

**pH:** 7.08

**Turbidity:** 2 NTU

**Temperature:** 29.8 °C

**Comments:**

**LABORATORY PARAMETERS**

**Enterococci:**

**E. Coli:** Yes

**CBOD:**

**Fecal Coliform:** Yes

**NBOD:**

**TSS:**

**Total Phosporus:**

**PHOTOGRAPHS**





**SAMPLE INFORMATION**

**Sampler:** C. Parker

**Date:** 06/13/2022

**Site:** Halls Mill Creek #1

**Time:** 11:27

**Sample No.:** HMC1-1

**Latitude:** 30.6159

**Flow:** Yes

**Longitude:** -88.2076

**FIELD PARAMETERS**

**Conductivity:** 92  $\mu$ S/cm

**Dissolved Oxygen:** 7.05 mg/L

**pH:** 6.95

**Turbidity:** 3 NTU

**Temperature:** 26.3 °C

**Comments:**

**LABORATORY PARAMETERS**

**Enterococci:**

**E. Coli:** Yes

**CBOD:**

**Fecal Coliform:** Yes

**NBOD:**

**TSS:** Yes

**Total Phosporus:**

**PHOTOGRAPHS**





**SAMPLE INFORMATION**

**Sampler:** C. Parker

**Date:** 06/13/2022

**Site:** Halls Mill Creek #2

**Time:** 10:23

**Sample No.:** HMC2-1

**Latitude:** 30.6085

**Flow:** Yes

**Longitude:** -88.1624

**FIELD PARAMETERS**

**Conductivity:** 85 µS/cm

**Dissolved Oxygen:** 6.47 mg/L

**pH:** 6.75

**Turbidity:** 3 NTU

**Temperature:** 25.0 °C

**Comments:**

**LABORATORY PARAMETERS**

**Enterococci:**

**E. Coli:** Yes

**CBOD:**

**Fecal Coliform:** Yes

**NBOD:**

**TSS:** Yes

**Total Phosporus:**

**PHOTOGRAPHS**





**SAMPLE INFORMATION**

**Sampler:** C. Parker

**Date:** 06/13/2022

**Site:** Moore Creek

**Time:** 09:29

**Sample No.:** MC-1

**Latitude:** 30.6269

**Flow:** Yes

**Longitude:** -88.1367

**FIELD PARAMETERS**

**Conductivity:** 109  $\mu$ S/cm

**Dissolved Oxygen:** 5.59 mg/L

**pH:** 6.63

**Turbidity:** 1 NTU

**Temperature:** 27.8 °C

**Comments:**

**LABORATORY PARAMETERS**

**Enterococci:**

**E. Coli:** Yes

**CBOD:**

**Fecal Coliform:** Yes

**NBOD:**

**TSS:**

**Total Phosporus:**

**PHOTOGRAPHS**





**SAMPLE INFORMATION**

**Sampler:** C. Parker

**Date:** 06/15/2022

**Site:** Bolton Branch (East)

**Time:** 11:12

**Sample No.:** BBE-2

**Latitude:** 30.6449

**Flow:** Yes

**Longitude:** -88.1025

**FIELD PARAMETERS**

**Conductivity:** 178  $\mu$ S/cm

**Dissolved Oxygen:** 3.6 mg/L

**pH:** 6.71

**Turbidity:** 3 NTU

**Temperature:** 29.2 °C

**Comments:**

**LABORATORY PARAMETERS**

**Enterococci:**

**E. Coli:** Yes

**CBOD:**

**Fecal Coliform:** Yes

**NBOD:**

**TSS:**

**Total Phosporus:**

**PHOTOGRAPHS**







**SAMPLE INFORMATION**

**Sampler:** C. Parker

**Date:** 06/15/2022

**Site:** Threemile Creek

**Time:** 10:30

**Sample No.:** TMC-2

**Latitude:** 30.6966

**Flow:** Yes

**Longitude:** -88.088

**FIELD PARAMETERS**

**Conductivity:** 100 µS/cm

**Dissolved Oxygen:** 5.27 mg/L

**pH:** 7.02

**Turbidity:** 8 NTU

**Temperature:** 29.2 °C

**Comments:**

**LABORATORY PARAMETERS**

**Enterococci:** Yes

**E. Coli:**

**CBOD:** Yes

**Fecal Coliform:**

**NBOD:** Yes

**TSS:**

**Total Phosporus:**

**PHOTOGRAPHS**





**SAMPLE INFORMATION**

**Sampler:** C. Parker

**Date:** 06/15/2022

**Site:** Toulmins Spring Branch

**Time:** 09:20

**Sample No.:** TSB-2

**Latitude:** 30.7217

**Flow:** Yes

**Longitude:** -88.0806

**FIELD PARAMETERS**

**Conductivity:** 230  $\mu$ S/cm

**Dissolved Oxygen:** 1.05 mg/L

**pH:** 6.43

**Turbidity:** 2 NTU

**Temperature:** 25.8 °C

**Comments:**

**LABORATORY PARAMETERS**

**Enterococci:**

**E. Coli:** Yes

**CBOD:**

**Fecal Coliform:** Yes

**NBOD:**

**TSS:**

**Total Phosporus:** Yes

**PHOTOGRAPHS**





**SAMPLE INFORMATION**

**Sampler:** C. Parker

**Date:** 06/15/2022

**Site:** UT to Three Mile Creek

**Time:** 09:49

**Sample No.:** UTMC-2

**Latitude:** 30.6962

**Flow:** Yes

**Longitude:** -88.0776

**FIELD PARAMETERS**

**Conductivity:** 291  $\mu$ S/cm

**Dissolved Oxygen:** 10.5 mg/L

**pH:** 8.74

**Turbidity:** 4 NTU

**Temperature:** 28.1 °C

**Comments:** D.O. ranged from 9-12

**LABORATORY PARAMETERS**

**Enterococci:**

**E. Coli:** Yes

**CBOD:**

**Fecal Coliform:** Yes

**NBOD:**

**TSS:**

**Total Phosporus:** Yes

**PHOTOGRAPHS**





**SAMPLE INFORMATION**

**Sampler:** C. Parker

**Date:** 06/16/2022

**Site:** Bolton Branch (West)

**Time:** 09:50

**Sample No.:** BBW-2

**Latitude:** 30.6271

**Flow:** Yes

**Longitude:** -88.1363

**FIELD PARAMETERS**

**Conductivity:** 133  $\mu\text{S}/\text{cm}$

**Dissolved Oxygen:** 2.4 mg/L

**pH:** 7.01

**Turbidity:** 2 NTU

**Temperature:** 30.9 °C

**Comments:**

**LABORATORY PARAMETERS**

**Enterococci:**

**E. Coli:** Yes

**CBOD:**

**Fecal Coliform:** Yes

**NBOD:**

**TSS:**

**Total Phosporus:**

**PHOTOGRAPHS**





**SAMPLE INFORMATION**

**Sampler:** C. Parker

**Date:** 06/16/2022

**Site:** Halls Mill Creek #1

**Time:** 10:34

**Sample No.:** HMC1-2

**Latitude:** 30.6159

**Flow:** Yes

**Longitude:** -88.2076

**FIELD PARAMETERS**

**Conductivity:** 99  $\mu$ S/cm

**Dissolved Oxygen:** 6.35 mg/L

**pH:** 7.01

**Turbidity:** 2 NTU

**Temperature:** 26.3  $^{\circ}$ C

**Comments:**

**LABORATORY PARAMETERS**

**Enterococci:**

**E. Coli:** Yes

**CBOD:**

**Fecal Coliform:** Yes

**NBOD:**

**TSS:** Yes

**Total Phosporus:**

**PHOTOGRAPHS**







**SAMPLE INFORMATION**

**Sampler:** C. Parker

**Date:** 06/16/2022

**Site:** Halls Mill Creek #2

**Time:** 11:07

**Sample No.:** HMC2-2

**Latitude:** 30.6085

**Flow:** Yes

**Longitude:** -88.1624

**FIELD PARAMETERS**

**Conductivity:** 83  $\mu$ S/cm

**Dissolved Oxygen:** 6.2 mg/L

**pH:** 6.66

**Turbidity:** 4 NTU

**Temperature:** 26.0 °C

**Comments:**

**LABORATORY PARAMETERS**

**Enterococci:**

**E. Coli:** Yes

**CBOD:**

**Fecal Coliform:** Yes

**NBOD:**

**TSS:** Yes

**Total Phosporus:**

**PHOTOGRAPHS**





**SAMPLE INFORMATION**

**Sampler:** C. Parker

**Date:** 06/16/2022

**Site:** Moore Creek

**Time:** 09:40

**Sample No.:** MC-2

**Latitude:** 30.6269

**Flow:** Yes

**Longitude:** -88.1367

**FIELD PARAMETERS**

**Conductivity:** 110 µS/cm

**Dissolved Oxygen:** 4.25 mg/L

**pH:** 6.51

**Turbidity:** 1 NTU

**Temperature:** 28.4 °C

**Comments:** D.O. ranged between 2.5 and 6

**LABORATORY PARAMETERS**

**Enterococci:**

**E. Coli:** Yes

**CBOD:**

**Fecal Coliform:** Yes

**NBOD:**

**TSS:**

**Total Phosporus:**

**PHOTOGRAPHS**





**SAMPLE INFORMATION**

**Sampler:** C. Parker

**Date:** 06/17/2022

**Site:** Bolton Branch (East)

**Time:** 11:17

**Sample No.:** BBE-3

**Latitude:** 30.6449

**Flow:** Yes

**Longitude:** -88.1025

**FIELD PARAMETERS**

**Conductivity:** 184  $\mu$ S/cm

**Dissolved Oxygen:** 4.7 mg/L

**pH:** 6.71

**Turbidity:** 3 NTU

**Temperature:** 29.6 °C

**Comments:**

**LABORATORY PARAMETERS**

**Enterococci:**

**E. Coli:** Yes

**CBOD:**

**Fecal Coliform:** Yes

**NBOD:**

**TSS:**

**Total Phosporus:**

**PHOTOGRAPHS**





**SAMPLE INFORMATION**

**Sampler:** C. Parker

**Date:** 06/17/2022

**Site:** Threemile Creek

**Time:** 10:40

**Sample No.:** TMC-3

**Latitude:** 30.6966

**Flow:** Yes

**Longitude:** -88.088

**FIELD PARAMETERS**

**Conductivity:** 100  $\mu$ S/cm

**Dissolved Oxygen:** 4.55 mg/L

**pH:** 6.23

**Turbidity:** 3 NTU

**Temperature:** 29.8 °C

**Comments:**

**LABORATORY PARAMETERS**

**Enterococci:** Yes

**E. Coli:**

**CBOD:** Yes

**Fecal Coliform:**

**NBOD:** Yes

**TSS:**

**Total Phosporus:**

**PHOTOGRAPHS**





**SAMPLE INFORMATION**

**Sampler:** C. Parker

**Date:** 06/17/2022

**Site:** Toulmins Spring Branch

**Time:** 09:30

**Sample No.:** TSB-3

**Latitude:** 30.7217

**Flow:** Yes

**Longitude:** -88.0806

**FIELD PARAMETERS**

**Conductivity:** 245  $\mu$ S/cm

**Dissolved Oxygen:** 1.01 mg/L

**pH:** 6.37

**Turbidity:** 2 NTU

**Temperature:** 26.5 °C

**Comments:**

**LABORATORY PARAMETERS**

**Enterococci:**

**E. Coli:** Yes

**CBOD:**

**Fecal Coliform:** Yes

**NBOD:**

**TSS:**

**Total Phosporus:** Yes

**PHOTOGRAPHS**







**SAMPLE INFORMATION**

**Sampler:** C. Parker

**Date:** 06/17/2022

**Site:** UT to Three Mile Creek

**Time:** 10:23

**Sample No.:** UTMC-3

**Latitude:** 30.6962

**Flow:** Yes

**Longitude:** -88.0776

**FIELD PARAMETERS**

**Conductivity:** 296  $\mu\text{S}/\text{cm}$

**Dissolved Oxygen:** 13.0 mg/L

**pH:** 8.98

**Turbidity:** 2 NTU

**Temperature:** 31.1 °C

**Comments:** DO ranged from 12.50 to 13.50

**LABORATORY PARAMETERS**

**Enterococci:**

**E. Coli:** Yes

**CBOD:**

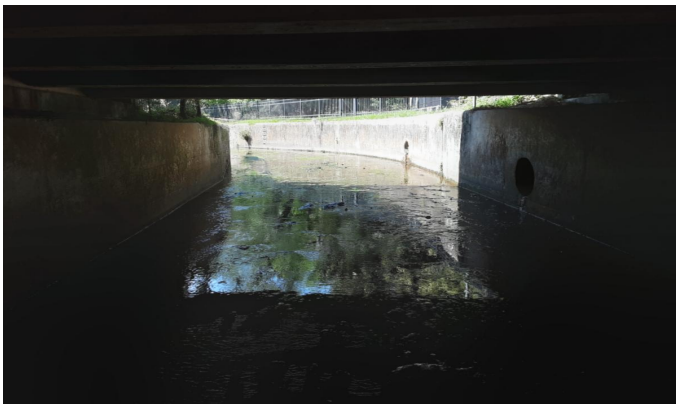
**Fecal Coliform:** Yes

**NBOD:**

**TSS:**

**Total Phosporus:** Yes

**PHOTOGRAPHS**





**SAMPLE INFORMATION**

**Sampler:** C. Parker

**Date:** 06/20/2022

**Site:** Bolton Branch (West)

**Time:** 09:20

**Sample No.:** BBW-3

**Latitude:** 30.6271

**Flow:** Yes

**Longitude:** -88.1363

**FIELD PARAMETERS**

**Conductivity:** 124  $\mu$ S/cm

**Dissolved Oxygen:** 4.6 mg/L

**pH:** 7.08

**Turbidity:** 3 NTU

**Temperature:** 30.9 °C

**Comments:**

**LABORATORY PARAMETERS**

**Enterococci:**

**E. Coli:** Yes

**CBOD:**

**Fecal Coliform:** Yes

**NBOD:**

**TSS:**

**Total Phosporus:**

**PHOTOGRAPHS**





**SAMPLE INFORMATION**

**Sampler:** C. Parker

**Date:** 06/20/2022

**Site:** Halls Mill Creek #1

**Time:** 09:56

**Sample No.:** HMC1-3

**Latitude:** 30.6159

**Flow:** Yes

**Longitude:** -88.2076

**FIELD PARAMETERS**

**Conductivity:** 89  $\mu$ S/cm

**Dissolved Oxygen:** 6.8 mg/L

**pH:** 7.11

**Turbidity:** 2 NTU

**Temperature:** 26.0 °C

**Comments:** DO ranged from 6.50 to 7.10

**LABORATORY PARAMETERS**

**Enterococci:**

**E. Coli:** Yes

**CBOD:**

**Fecal Coliform:** Yes

**NBOD:**

**TSS:** Yes

**Total Phosporus:**

**PHOTOGRAPHS**





**SAMPLE INFORMATION**

**Sampler:** C. Parker

**Date:** 06/20/2022

**Site:** Halls Mill Creek #2

**Time:** 10:54

**Sample No.:** HMC2-3

**Latitude:** 30.6085

**Flow:** Yes

**Longitude:** -88.1624

**FIELD PARAMETERS**

**Conductivity:** 87  $\mu$ S/cm

**Dissolved Oxygen:** 2.15 mg/L

**pH:** 6.79

**Turbidity:** 3 NTU

**Temperature:** 25.2 °C

**Comments:**

**LABORATORY PARAMETERS**

**Enterococci:**

**E. Coli:** Yes

**CBOD:**

**Fecal Coliform:** Yes

**NBOD:**

**TSS:** Yes

**Total Phosporus:**

**PHOTOGRAPHS**





**SAMPLE INFORMATION**

**Sampler:** C. Parker

**Date:** 06/20/2022

**Site:** Moore Creek

**Time:** 09:09

**Sample No.:** MC-3

**Latitude:** 30.6269

**Flow:** Yes

**Longitude:** -88.1367

**FIELD PARAMETERS**

**Conductivity:** 102 µS/cm

**Dissolved Oxygen:** 2.7 mg/L

**pH:** 6.54

**Turbidity:** 2 NTU

**Temperature:** 28.2 °C

**Comments:**

**LABORATORY PARAMETERS**

**Enterococci:**

**E. Coli:** Yes

**CBOD:**

**Fecal Coliform:** Yes

**NBOD:**

**TSS:**

**Total Phosporus:**

**PHOTOGRAPHS**







**SAMPLE INFORMATION**

**Sampler:** C. Parker

**Date:** 06/22/2022

**Site:** Bolton Branch (East)

**Time:** 11:23

**Sample No.:** BBE-4

**Latitude:** 30.6449

**Flow:** Yes

**Longitude:** -88.1025

**FIELD PARAMETERS**

**Conductivity:** 151  $\mu$ S/cm

**Dissolved Oxygen:** 7.3 mg/L

**pH:** 6.81

**Turbidity:** 2 NTU

**Temperature:** 29.6 °C

**Comments:** DO ranged from 7.10 to 7.50

**LABORATORY PARAMETERS**

**Enterococci:**

**E. Coli:** Yes

**CBOD:**

**Fecal Coliform:** Yes

**NBOD:**

**TSS:**

**Total Phosporus:**

**PHOTOGRAPHS**





**SAMPLE INFORMATION**

**Sampler:** C. Parker **Date:** 06/22/2022  
**Site:** Threemile Creek **Time:** 10:44  
**Sample No.:** TMC-4 **Latitude:** 30.6966  
**Flow:** Yes **Longitude:** -88.088

**FIELD PARAMETERS**

**Conductivity:** 113  $\mu$ S/cm **Dissolved Oxygen:** 4.75 mg/L  
**pH:** 6.65 **Turbidity:** 5 NTU  
**Temperature:** 30.9 °C

**Comments:** DO ranged between 4.50 and 5.00

**LABORATORY PARAMETERS**

**Enterococci:** Yes **E. Coli:**  
**CBOD:** Yes **Fecal Coliform:**  
**NBOD:** Yes **TSS:**  
**Total Phosporus:**

**PHOTOGRAPHS**





**SAMPLE INFORMATION**

**Sampler:** C. Parker

**Date:** 06/22/2022

**Site:** Toulmins Spring Branch

**Time:** 09:37

**Sample No.:** TSB-4

**Latitude:** 30.7217

**Flow:** Yes

**Longitude:** -88.0806

**FIELD PARAMETERS**

**Conductivity:** 161  $\mu$ S/cm

**Dissolved Oxygen:** 8.89 mg/L

**pH:** 6.68

**Turbidity:** 3 NTU

**Temperature:** 26.7 °C

**Comments:**

**LABORATORY PARAMETERS**

**Enterococci:**

**E. Coli:** Yes

**CBOD:**

**Fecal Coliform:** Yes

**NBOD:**

**TSS:**

**Total Phosporus:** Yes

**PHOTOGRAPHS**





**SAMPLE INFORMATION**

**Sampler:** C. Parker

**Date:** 06/22/2022

**Site:** UT to Three Mile Creek

**Time:** 10:11

**Sample No.:** UTMC-4

**Latitude:** 30.6962

**Flow:** Yes

**Longitude:** -88.0776

**FIELD PARAMETERS**

**Conductivity:** 293  $\mu$ S/cm

**Dissolved Oxygen:** mg/L

**pH:** 9.09

**Turbidity:** 3 NTU

**Temperature:** 31.3 °C

**Comments:** DO was OR

**LABORATORY PARAMETERS**

**Enterococci:**

**E. Coli:** Yes

**CBOD:**

**Fecal Coliform:** Yes

**NBOD:**

**TSS:**

**Total Phosporus:** Yes

**PHOTOGRAPHS**





**SAMPLE INFORMATION**

**Sampler:** C. Parker

**Date:** 06/23/2022

**Site:** Bolton Branch (West)

**Time:** 09:38

**Sample No.:** BBW-4

**Latitude:** 30.6271

**Flow:** Yes

**Longitude:** -88.1363

**FIELD PARAMETERS**

**Conductivity:** 129  $\mu$ S/cm

**Dissolved Oxygen:** 5.8 mg/L

**pH:** 7.13

**Turbidity:** 3 NTU

**Temperature:** 30.7 °C

**Comments:**

**LABORATORY PARAMETERS**

**Enterococci:**

**E. Coli:** Yes

**CBOD:**

**Fecal Coliform:** Yes

**NBOD:**

**TSS:**

**Total Phosporus:**

**PHOTOGRAPHS**







**SAMPLE INFORMATION**

**Sampler:** C. Parker

**Date:** 06/23/2022

**Site:** Halls Mill Creek #1

**Time:** 10:16

**Sample No.:** HMC1-4

**Latitude:** 30.6159

**Flow:** Yes

**Longitude:** -88.2076

**FIELD PARAMETERS**

**Conductivity:** 90  $\mu$ S/cm

**Dissolved Oxygen:** 6.64 mg/L

**pH:** 7.11

**Turbidity:** 2 NTU

**Temperature:** 26.0 °C

**Comments:**

**LABORATORY PARAMETERS**

**Enterococci:**

**E. Coli:** Yes

**CBOD:**

**Fecal Coliform:** Yes

**NBOD:**

**TSS:** Yes

**Total Phosporus:**

**PHOTOGRAPHS**





**SAMPLE INFORMATION**

**Sampler:** C. Parker

**Date:** 06/23/2022

**Site:** Halls Mill Creek #2

**Time:** 10:56

**Sample No.:** HMC2-4

**Latitude:** 30.6085

**Flow:** Yes

**Longitude:** -88.1624

**FIELD PARAMETERS**

**Conductivity:** 82  $\mu$ S/cm

**Dissolved Oxygen:** 6.75 mg/L

**pH:** 6.81

**Turbidity:** 3 NTU

**Temperature:** 25.4 °C

**Comments:**

**LABORATORY PARAMETERS**

**Enterococci:**

**E. Coli:** Yes

**CBOD:**

**Fecal Coliform:** Yes

**NBOD:**

**TSS:** Yes

**Total Phosporus:**

**PHOTOGRAPHS**





**SAMPLE INFORMATION**

**Sampler:** C. Parker

**Date:** 06/23/2022

**Site:** Moore Creek

**Time:** 09:23

**Sample No.:** MC-4

**Latitude:** 30.6269

**Flow:** Yes

**Longitude:** -88.1367

**FIELD PARAMETERS**

**Conductivity:** 100 µS/cm

**Dissolved Oxygen:** 3.0 mg/L

**pH:** 6.51

**Turbidity:** 1 NTU

**Temperature:** 27.9 °C

**Comments:**

**LABORATORY PARAMETERS**

**Enterococci:**

**E. Coli:** Yes

**CBOD:**

**Fecal Coliform:** Yes

**NBOD:**

**TSS:**

**Total Phosporus:**

**PHOTOGRAPHS**





**SAMPLE INFORMATION**

**Sampler:** C. Parker

**Date:** 06/24/2022

**Site:** Bolton Branch (East)

**Time:** 11:17

**Sample No.:** BBE-5

**Latitude:** 30.6449

**Flow:** Yes

**Longitude:** -88.1025

**FIELD PARAMETERS**

**Conductivity:** 183  $\mu$ S/cm

**Dissolved Oxygen:** 5.1 mg/L

**pH:** 6.89

**Turbidity:** 2 NTU

**Temperature:** 31.3 °C

**Comments:**

**LABORATORY PARAMETERS**

**Enterococci:**

**E. Coli:** Yes

**CBOD:**

**Fecal Coliform:** Yes

**NBOD:**

**TSS:**

**Total Phosporus:**

**PHOTOGRAPHS**





**SAMPLE INFORMATION**

**Sampler:** C. Parker

**Date:** 06/24/2022

**Site:** Threemile Creek

**Time:** 10:40

**Sample No.:** TMC-5

**Latitude:** 30.6966

**Flow:** Yes

**Longitude:** -88.088

**FIELD PARAMETERS**

**Conductivity:** 112 µS/cm

**Dissolved Oxygen:** 3.81 mg/L

**pH:** 6.5

**Turbidity:** 4 NTU

**Temperature:** 31.2 °C

**Comments:**

**LABORATORY PARAMETERS**

**Enterococci:** Yes

**E. Coli:**

**CBOD:** Yes

**Fecal Coliform:**

**NBOD:** Yes

**TSS:**

**Total Phosporus:**

**PHOTOGRAPHS**







**SAMPLE INFORMATION**

<b>Sampler:</b> C. Parker	<b>Date:</b> 06/24/2022
<b>Site:</b> Toulmins Spring Branch	<b>Time:</b> 09:38
<b>Sample No.:</b> TSB-5	<b>Latitude:</b> 30.7217
<b>Flow:</b> Yes	<b>Longitude:</b> -88.0806

**FIELD PARAMETERS**

<b>Conductivity:</b> 240 $\mu$ S/cm	<b>Dissolved Oxygen:</b> 0.83 mg/L
<b>pH:</b> 6.45	<b>Turbidity:</b> 2 NTU
<b>Temperature:</b> 26.2 °C	

**Comments:**

**LABORATORY PARAMETERS**

<b>Enterococci:</b>	<b>E. Coli:</b> Yes
<b>CBOD:</b>	<b>Fecal Coliform:</b> Yes
<b>NBOD:</b>	<b>TSS:</b>
<b>Total Phosporus:</b> Yes	

**PHOTOGRAPHS**





**SAMPLE INFORMATION**

**Sampler:** C. Parker

**Date:** 06/24/2022

**Site:** UT to Three Mile Creek

**Time:** 10:16

**Sample No.:** UTMC-5

**Latitude:** 30.6962

**Flow:** Yes

**Longitude:** -88.0776

**FIELD PARAMETERS**

**Conductivity:** 272  $\mu$ S/cm

**Dissolved Oxygen:** 11.0 mg/L

**pH:** 9.31

**Turbidity:** 5 NTU

**Temperature:** 31.5 °C

**Comments:** DO ranged between 10.50 and 11.60

**LABORATORY PARAMETERS**

**Enterococci:**

**E. Coli:** Yes

**CBOD:**

**Fecal Coliform:** Yes

**NBOD:**

**TSS:**

**Total Phosporus:** Yes

**PHOTOGRAPHS**





**SAMPLE INFORMATION**

**Sampler:** C. Parker

**Date:** 06/28/2022

**Site:** Bolton Branch (West)

**Time:** 09:25

**Sample No.:** BBW-5

**Latitude:** 30.6271

**Flow:** Yes

**Longitude:** -88.1363

**FIELD PARAMETERS**

**Conductivity:** 119  $\mu$ S/cm

**Dissolved Oxygen:** 4.3 mg/L

**pH:** 7.06

**Turbidity:** 3 NTU

**Temperature:** 29.5 °C

**Comments:**

**LABORATORY PARAMETERS**

**Enterococci:**

**E. Coli:** Yes

**CBOD:**

**Fecal Coliform:** Yes

**NBOD:**

**TSS:**

**Total Phosporus:**

**PHOTOGRAPHS**





**SAMPLE INFORMATION**

**Sampler:** C. Parker

**Date:** 06/28/2022

**Site:** Halls Mill Creek #1

**Time:** 10:03

**Sample No.:** HMC1-5

**Latitude:** 30.6159

**Flow:** Yes

**Longitude:** -88.2076

**FIELD PARAMETERS**

**Conductivity:** 90  $\mu$ S/cm

**Dissolved Oxygen:** 6.4 mg/L

**pH:** 7.0

**Turbidity:** 3 NTU

**Temperature:** 25.7 °C

**Comments:**

**LABORATORY PARAMETERS**

**Enterococci:**

**E. Coli:** Yes

**CBOD:**

**Fecal Coliform:** Yes

**NBOD:**

**TSS:** Yes

**Total Phosporus:**

**PHOTOGRAPHS**





**SAMPLE INFORMATION**

**Sampler:** C. Parker

**Date:** 06/28/2022

**Site:** Halls Mill Creek #2

**Time:** 10:49

**Sample No.:** HMC2-5

**Latitude:** 30.6085

**Flow:** Yes

**Longitude:** -88.1624

**FIELD PARAMETERS**

**Conductivity:** 82  $\mu$ S/cm

**Dissolved Oxygen:** 5.5 mg/L

**pH:** 6.71

**Turbidity:** 5 NTU

**Temperature:** 25.3 °C

**Comments:**

**LABORATORY PARAMETERS**

**Enterococci:**

**E. Coli:** Yes

**CBOD:**

**Fecal Coliform:** Yes

**NBOD:**

**TSS:** Yes

**Total Phosporus:**

**PHOTOGRAPHS**







**SAMPLE INFORMATION**

**Sampler:** C. Parker

**Date:** 06/28/2022

**Site:** Moore Creek

**Time:** 09:11

**Sample No.:** MC-5

**Latitude:** 30.6269

**Flow:** Yes

**Longitude:** -88.1367

**FIELD PARAMETERS**

**Conductivity:** 84 µS/cm

**Dissolved Oxygen:** 2.85 mg/L

**pH:** 6.6

**Turbidity:** 2 NTU

**Temperature:** 27.1 °C

**Comments:**

**LABORATORY PARAMETERS**

**Enterococci:**

**E. Coli:** Yes

**CBOD:**

**Fecal Coliform:** Yes

**NBOD:**

**TSS:**

**Total Phosporus:**

**PHOTOGRAPHS**

