

# SPILL CONTROL & RESPONSE/ ILLICIT DISCHARGE DETECTION & ELIMINATION/ BEST MANAGEMENT PRACTICES



CITY OF MOBILE  
PUBLIC WORKS DEPARTMENT  
HEAVY EQUIPMENT & STORMDRAIN  
ROW & SWEEPER  
MOBILE, AL

2017 TRAINING

# 770 Gayle Street

- General parking area for personal vehicles
- Buildings for office space
- Parking area for City vehicles (garbage trucks, sweepers, etc.)
- Maintenance buildings

# 770 Gayle Street

- Two wash areas; wash areas are connected to sanitary sewer system and has an oil/water separator.
- The facility is paved with multiple storm drains onsite and slopes east and drains into Tennessee Ditch.
- The facility is a SPCC regulated facility (40 CFR 112.7)
  - Simply meaning over 1320 gallons of petroleum product is stored above ground or 42,000 gallons is stored underground



# Which City Facilities are SPCC Regulated?

Facility	Registered Tanks or Equipment	More than 42,000 Gal UST Capacity?	More than 1,320 Gal AST Capacity?	SPCC Regulated ?
Municipal Garage / Public Works	(3) 10k Gal Diesel USTs	Yes	Yes	Yes
	(2) 10k Gal Gas USTs			
	Portable Containers			
	Various ASTs			
Police 3rd Precinct	(1) 4k Gal Gas UST	No	Yes	Yes
Motor Pool	(1) 2k Gal UST	No	No	No
Langan Park Fueling Station	(1) 10k Gal Gas AST (2) 1k Gal Diesel USTs	No	Yes	Yes
Public Safety Complex	(2) 10k Gal Gas/Diesel ASTs (1) 3k Diesel AST	No	Yes	Yes
The Wave	(2) 10k Diesel ASTs	No	Yes	Yes
	Gasoline Tank Installed 2016			
	(1) 200 Gal Diesel AST			
	Portable Containers			
	Various ASTs			

**The City has 5 SPCC Regulated facilities.** Copies of SPCC Plans are kept at each facility and with Environmental Engineering.

# SPCC Facility Discharge History

Facility	Recent Discharge (within 10 yrs)	Historical Discharge (more than 10 years)	Release Remediated	Comments
Municipal Garage / Public Works	No	Yes	Yes	Release from UST in 1993 and 2001
Police 3rd Precinct	No	No	NA	
Motor Pool	No	No	NA	
Langan Park Fueling Station	No	Yes	Yes	Release impacted 12M Creek resulting in a Clean Water Act Violation
Public Safety Complex	No	No	NA	
The Wave	Yes (2014)	Yes (1993)	On-going	Remediation is on-going for the 2014 release, but nearing completion. Remediation is complete for the 1993 release.

# SPCC Plan Contents

- Identify oil storage and use locations
- Designates responsibilities for implementation
- Establish spill prevention and response procedures

Facility	SPCC Plan Location	Facility Contact
Municipal Garage / Public Works	Fueling Services office next to Unleaded Fuel Pumps	William Bush (251) 208-2884
Police 3rd Precinct	Office	Tammy Manzy (251) 470-7744
Langan Park Fueling Station	Yellow Box near Diesel Pumps mounted to exterior wall	William Bush (251) 208-2884
Public Safety Complex	Police Office	Donald Griffith (251) 208-1302
The Wave	Office	Vince McCarroll (251) 338-0091



# 770 Gayle Street: Bulk Oil Storage

- Five (5) 10,000-gallon underground storage tanks are on-site
- Each tank has an automatic tank gauge and flow restrictor and are double-walled steel
- Spill control is a catchment basin with containment sump

# 770 Gayle Street: Bulk Oil Storage

- Multiple 300-gallon above ground storage tanks onsite
- Building acts as secondary containment for above ground tanks

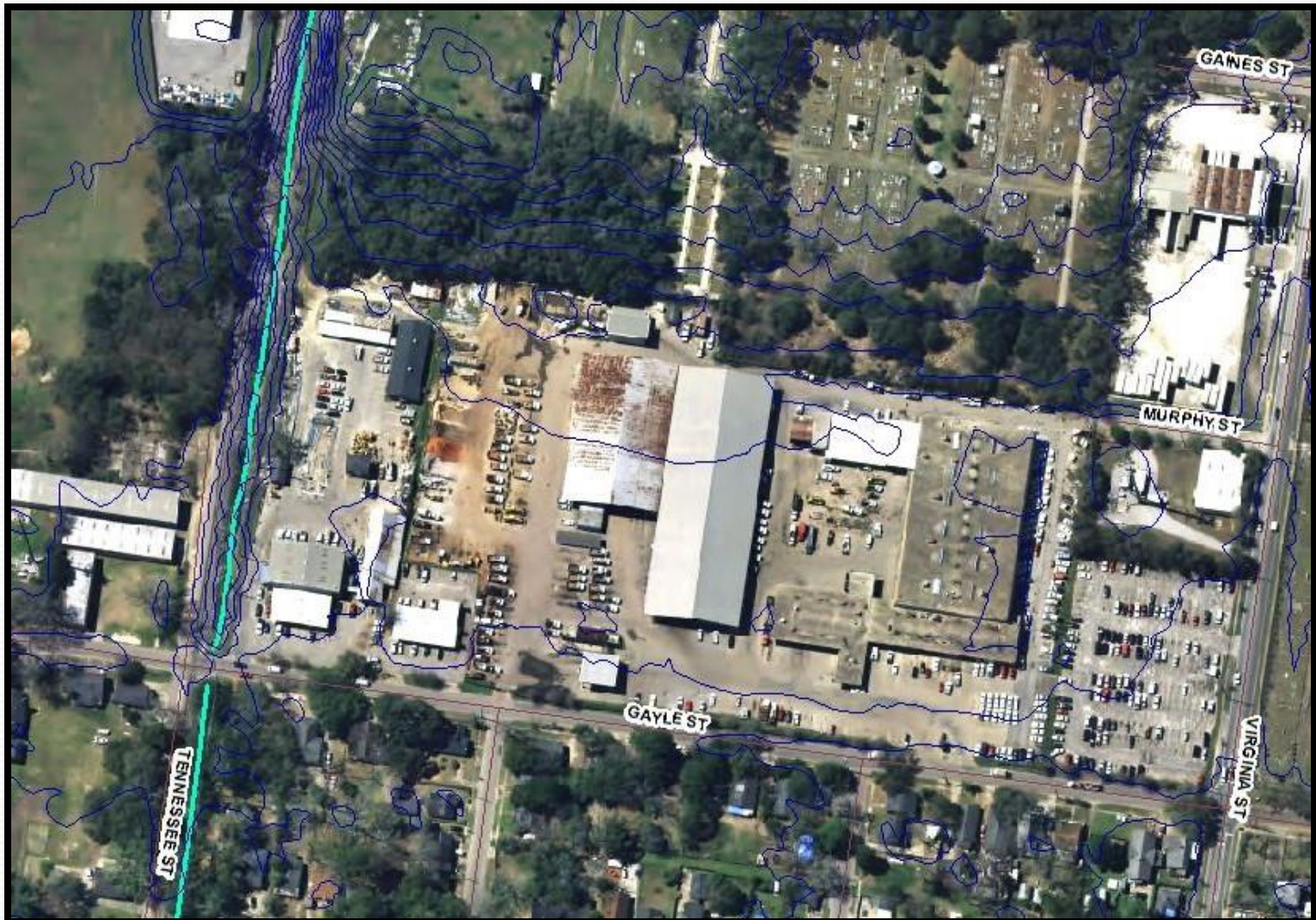


# 770 Gayle Street: Bulk Oil Storage

- The facility uses the 72 hour rule: All floors, walls, and catchment basins are designed to contain stored products for a minimum of 72 hours
- Tank lines are tested annually



# 770 Gayle Street





# **SPILL CONTROL & RESPONSE**

- **SPILL PREVENTION**
- **SPILL RESPONSE**
- **SPILL CLEANUP**





# SPILL PREVENTION

- City facilities which store or use in bulk any oil based product(s) and City vehicles ***must*** have oil spill containment structures and/or equipment to prevent oil spills and contaminated runoff from reaching the following:
  - *Storm drains*
  - *Streams*
  - *Ditches*
  - *Rivers, bays, etc.*
  - *Other navigable waters*





# UTILIZE FOR OIL CONTAINMENT

**OIL-DRI**



**SPILL PADS**



**DIRT / DIRT BERM**



**OIL BOOMS**





# SPILL CONTAINMENT KIT

- Spill containment kits are located at all fueling stations
- Each kit should contain oil rags, boom, or Oil-Dri

## SPILL CONTAINMENT KIT







# **SPILL PREVENTION PROCEDURES**

- Locate and inspect spill response material prior to checking or filling oil filled equipment
- Visually inspect oil filled equipment prior to use
  - Ensure connections from hoses are connected properly before operating vehicle. If this check is not done correctly, spill results.

# WHAT IF A SPILL OCCURS?

## SPILL RESPONSE

- **STOP** the source of the spill (on-site personnel):
  - Have situational awareness in identifying spills/leaks from vehicles.
  - Do not stop a leaking vehicle in front of storm water inlets or a waterbody
  - Turn off equipment
  - Do not keep vehicle in operation, stop immediately upon discovery



# WHAT IF A SPILL OCCURS?

## SPILL RESPONSE

- **CONTAIN** and **PREVENT** the spill from spreading to the storm water system by utilizing:
  - Spill Pads
  - Oil-Dri
  - Sand, Dirt, Leaves
  - Booms/Wattles
  - Dirt berms
- Use dry clean-up methods like sweeping or shoveling.  
**Never hose down a spill or leak**
- You are the first line of response! Use spill response equipment that are in each vehicle to try and contain as much as possible



# WHAT IF A SPILL OCCURS?

## SPILL RESPONSE

- **NOTIFY** the appropriate personnel
  - Your Immediate Supervisor
  - Spill Crew Supervisor, Angela Pompey 208-7530 or 709-0084
  - Engineering, David Ludwig 208-7594 or 281-6408
- Supervisor contacts Spill Crew Supervisor and calls 311
- Spill Crew Supervisor will direct cleanup response efforts and make the determination of when the site is remediated.



# **Spill Response SOP**

- Updated Spill Response Standard Operating Procedure
- Effective April 2016
- **Questions regarding SOP?**



# VISUALLY CONFIRMED CONTAMINATED SOIL

- All contaminated soil must be excavated, transferred, and sealed in a 55 gallon drum (Spill Crew will handle)
- The area surrounding the spill must be returned to the same condition that existed prior to the spill
- So if you visually identify potentially contaminated soil, be sure to report it to the Spill Crew Supervisor



# REPORTABLE SPILLS

- A reportable spill is defined as *any spill that reaches the storm water system or any waters of the state*
- City of Mobile spill personnel are responsible for cleanup- *call 311. Environmental Specialist will conduct an investigation into the incident and file report.*
- If the spill is too large for personnel to handle, an outside spill response contractor will be called

# REPORTING REQUIREMENTS

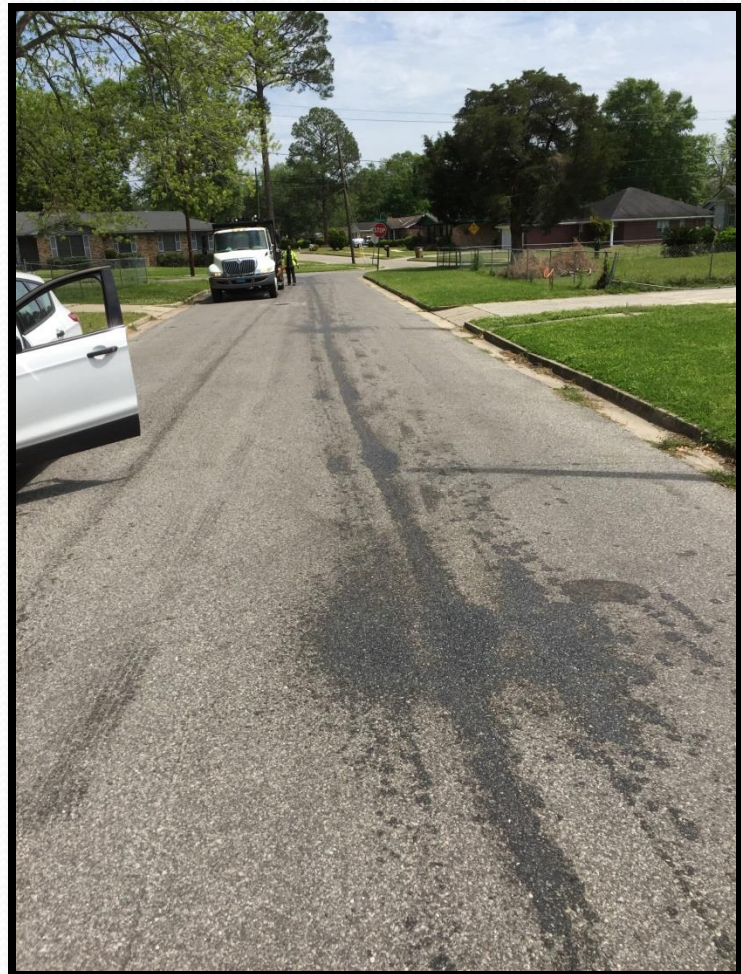
- Notify Regulatory Agencies

- The following agencies will be notified if oil/fuel is discharge to a waterway
  - National Response Center (NRC)
  - U.S. Coast Guard
  - Alabama Department Of Environmental Management (ADEM)

If spill is significant in impacting a waterway, these agencies can levy costly fines to the City. **That is why prompt response to a spill is so critical** (not only in cleaning but in recognizing a spill).



# Spill Response Examples & Issues





# Spill Response Examples & Issues





# Spill Response Examples & Issues





# Spill Response Examples & Issues





# Spill Response Examples & Issues





# Spill Response Examples & Issues





# Spill Response Examples & Issues





# ILLICIT DISCHARGE

- In short, any substance other than rainwater, drinking water, or ground water that enters into the storm water system
- Oil spills = illicit discharges
  - Required to track and report annually
- If you witness or suspect an illicit discharge  
call 311

# ILLICIT DISCHARGE

- Other illicit discharge examples include the following entering into the storm drain or waterways:
  - Grass Clippings and Litter
  - PHFs
  - Paints / solvents
  - Washing equipment in unauthorized areas



# Illicit Discharge Example





# Best Management Practices: Good Housekeeping





# Housekeeping Activities

- Keep outdoor areas neat and organized
- Keep oil spill clean-up equipment in vehicles (oil spill pads) and at facility (spill containment box, Oil-Dri bags).
- **Sweep up or clean-up any residues or wastes that accumulate outdoors where they might contact stormwater or runoff (Oil-Dri)**
- Regularly pick up trash, floatables and debris.



# Housekeeping Examples





# Housekeeping Examples





# Housekeeping Examples





# Housekeeping Examples





# Housekeeping Examples





# Vehicle Fueling



# Vehicle Fueling Instructions

- Park as close as possible to the fuel pump and do not stretch the hose
- Stay with your vehicle during fueling
- Spot clean small fuels leaks and drips immediately









# Vehicle & Equipment Washing





# Vehicle & Equipment Washing SOP

- Only wash vehicles and equipment in authorized wash bays or racks. Never wash outdoors where waste water discharges could flow into storm drainage system.
- Use only the cleaners and soaps provided by the wash facility. Do not substitute other cleaners.
- Clean up wash area when finished.
- Remove litter prior to washing

# Vehicle & Equipment Washing SOP

- Updated in February of 2017
- **Questions regarding SOP?**



# Material Storage Areas



# Material Storage Areas SOP

- Updated in February of 2017
- **Questions regarding SOP?**



# Dirt & Gravel Roads & Easement Maintenance SOP

- Updated in February of 2017
- **Questions regarding SOP?**

# Street Sweeping SOP

- Effective May of 2017
- **Questions regarding SOP?**



# Waste Management



# Waste Disposal

- Never use storm drains for waste disposal. Dispose of all waste according to applicable regulations.
- Always keep outdoor waste receptacle lids closed unless placing waste inside.
- If waste is found around receptacles, clean it up before the debris can be washed away
- Do not overfill outdoor waste receptacles.



# Review: Question 1

Tony the Operator is driving a garbage truck and notices on Virginia Street that his vehicle is leaking. Who is the first person who should be contacted in the event of a spill?

- A. Departmental Supervisor/Crew Chief
- B. The Mayor
- C. Spill Crew Supervisor
- D. The Environmental Specialist

# Review: Question 2

During your route, you or a coworker notice a leak/discharge of fluid coming from the City vehicle. Knowing your Spill Response SOP, you know that it's okay to continue operation of the vehicle to get your route finished and then you will contact your Supervisor.

True or False



# Review: Question 3

Hosing down a spill or release outdoors is OK under what circumstances?

- A.Never
- B.When its already raining
- C.When the spilled material is water soluble
- D.When the spilled material is not water soluble

# Review: Question 4

Vehicles should only be washed with detergents...?

- A. Over a storm drain or drainage ditch
- B. In the maintenance area
- C. Outdoors
- D. In the designated wash rack or wash bay



# Review: Question 5

If you drip or leak a small amount of diesel fuel during vehicle fueling, you should...

- A. 'Spot clean' it immediately
- B. Dispose of any clean-up wastes in the appropriate waste receptacle
- C. Spread absorbent or treatment chemicals over and around the spill
- D. All of the above

# CONCLUSION

- Spill Response: **Stop, Contain, Prevent, Notify**
- Spill Containment Kit at each fueling station
- Spill response equipment on each City vehicle (Spill Pads & Oil-Dri)
- Good Housekeeping Best Management Practices





# **CONCLUSION**

- **Spill Response SOP**
- Vehicle & Equipment Washing SOP
- Material Storage Areas SOP
- Dirt & Gravel Roads & Easements Maintenance SOP
- Street Sweeping SOP



# QUESTIONS???