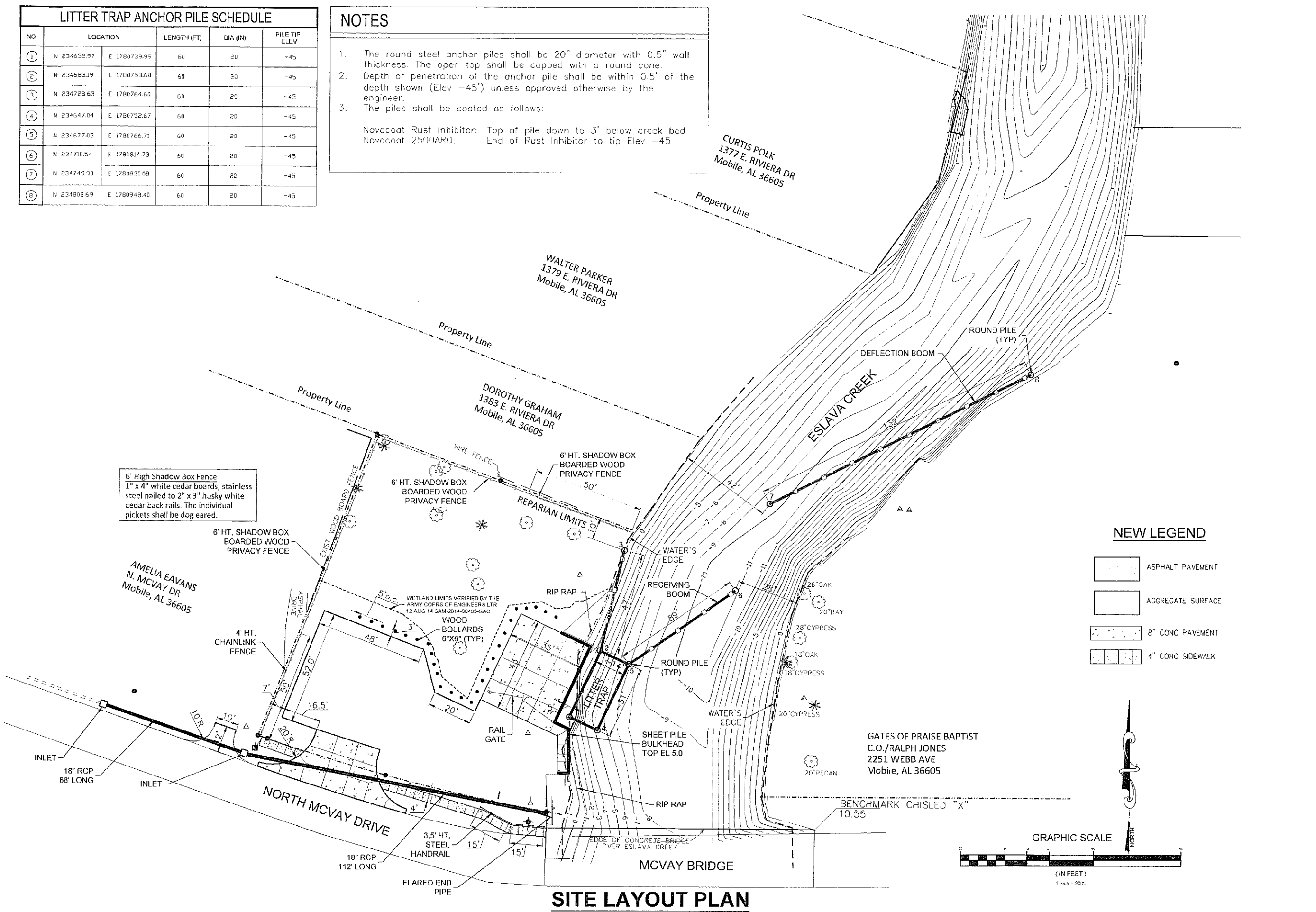


LITTER TRAP ANCHOR PILE SCHEDULE					
NO.	LOCATION		LENGTH (FT)	DIA (IN)	PILE TIP ELEV
1	N 234652.97	E 1780739.99	60	20	-45
2	N 234683.19	E 1780753.68	60	20	-45
3	N 234728.63	E 1780764.60	60	20	-45
4	N 234647.04	E 1780752.67	60	20	-45
5	N 234677.03	E 1780766.71	60	20	-45
6	N 234710.54	E 1780814.73	60	20	-45
7	N 234749.90	E 1780830.08	60	20	-45
8	N 234808.69	E 1780948.40	60	20	-45

**NOTES**

- The round steel anchor piles shall be 20" diameter with 0.5" wall thickness. The open top shall be capped with a round cone.
- Depth of penetration of the anchor pile shall be within 0.5' of the depth shown (Elev -45') unless approved otherwise by the engineer.
- The piles shall be coated as follows:  
 Novacoat Rust Inhibitor: Top of pile down to 3' below creek bed  
 Novacoat 2500ARO: End of Rust Inhibitor to tip Elev -45



**LITTER TRAP & SITE IMPROVEMENTS  
 ESLAVA CREEK @ MCVAY BRIDGE  
 CITY OF MOBILE, ALABAMA  
 PROJECT NO. 2015-202-02**

**DORSEY & DORSEY**  
 Engineering  
 Integrity Quality Excellence  
 6051 AIRPORT BLVD., STE B3  
 MOBILE, ALABAMA 36609  
 p251.344.3983 f251.344.4061

**AS-BUILT**

REVISION NO.	DATE

DORSEY JOB NUMBER: MOB-2014-01  
 ISSUE DATE: 1/25/16  
 CAD FILE NAME: ESLAVA-102  
 SCALE: AS NOTED  
 DESIGNED BY: L. DORSEY, PE  
 DRAWN BY: DORSEY  
 CHECKED BY: R. MUNIZ  
 SHEET DESCRIPTION & NUMBER: SITE LAYOUT PLAN  
**C102**

C:\Users\Larry\Documents\Projects\City of Mobile\Litter Trap Eslava Creek\As-Built\C102-Eslava.dwg