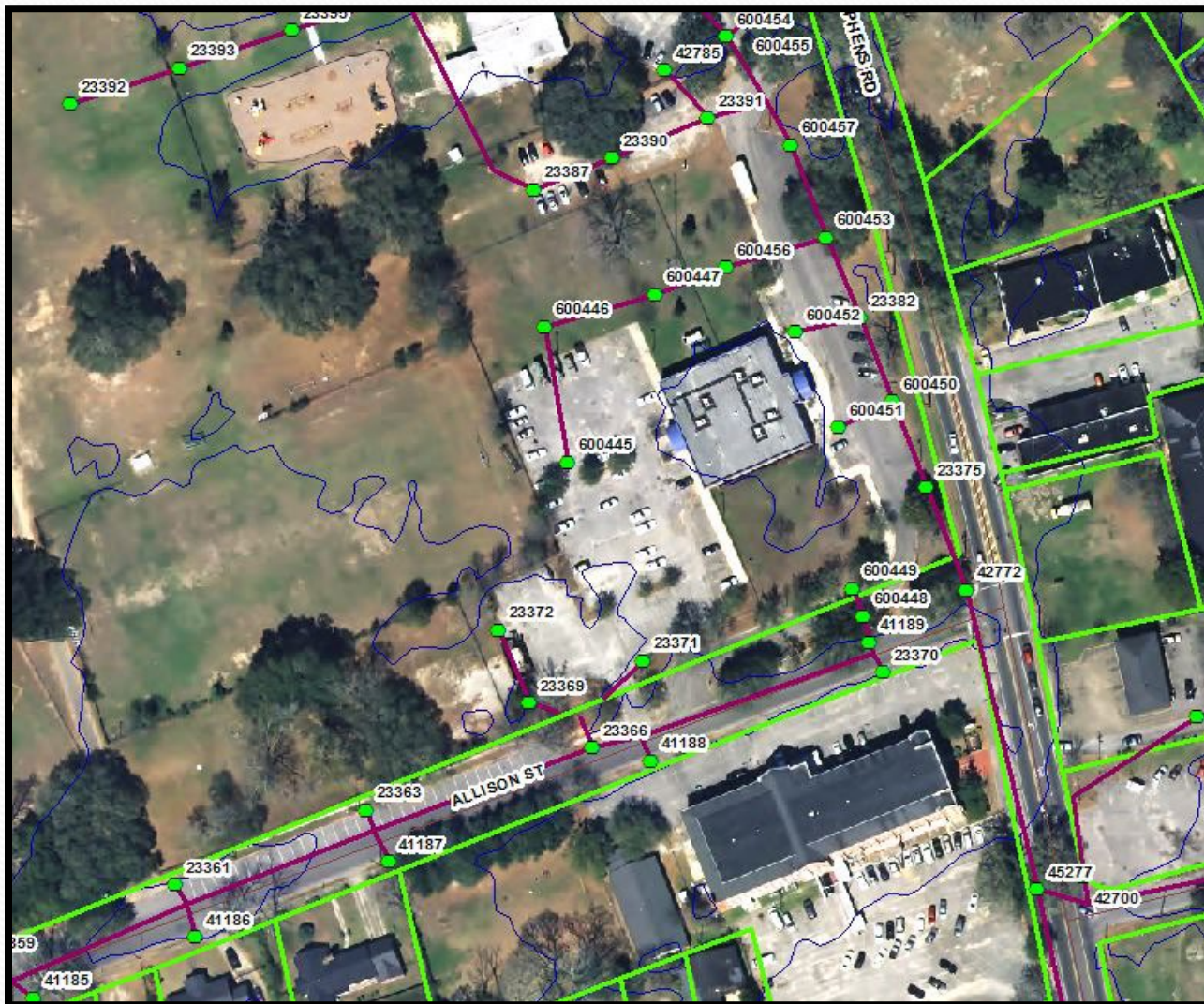


SPILL CONTROL & RESPONSE/ ILLICIT DISCHARGE DETECTION & ELIMINATION/ BEST MANAGEMENT PRACTICES



CITY OF MOBILE
3rd PRECINCT
2165 ST. STEPHENS ROAD
MOBILE, AL

2165 St. Stephens Road



2165 St. Stephens Road:

Bulk Oil Storage

- The facility is a SPCC regulated facility (40 CFR 112.7)
 - Simply meaning over 1,320 gallons of petroleum product is stored above ground or 42,000 gallons is stored underground
- One 4000 gallon Above Ground Storage Tank (AST)
- AST has an automatic tank gauge and flow restrictor and is concrete

Which City Facilities are SPCC Regulated?

Facility	Registered Tanks or Equipment	More than 42,000 Gal UST Capacity?	More than 1,320 Gal AST Capacity?	SPCC Regulated?
Municipal Garage / Public Works	(3) 10k Gal Diesel USTs	Yes	Yes	Yes
	(2) 10k Gal Gas USTs			
	Portable Containers			
	Various ASTs			
Police 3rd Precinct	(1) 4k Gal Gas UST	No	Yes	Yes
Langan Park Fueling Station	(1) 10k Gal Gas AST (2) 1k Gal Diesel USTs	No	Yes	Yes
Public Safety Complex	(2) 10k Gal Gas/Diesel ASTs (1) 3k Diesel AST	No	Yes	Yes
Hurtel Street	(1) 550 Gal Gas AST Various ASTs	No	Yes	Yes
Fire Station 7	(1) 2k Gal Diesel AST	No	Yes	Yes
The Wave	(2) 10k Diesel ASTs	No	Yes	Yes
	(1) 200 Gal Diesel AST			
	Portable Containers			
	Various ASTs			

The City has 7 SPCC Regulated facilities. Copies of SPCC Plans are kept at each facility and with Environmental Engineering.

SPCC Facility Discharge History

Facility	Recent Discharge (within 10 yrs)	Historical Discharge (more than 10 years)	Release Remediated	Comments
Municipal Garage / Public Works	Yes	Yes	Yes (3)	Release from UST in 1993 and 2001 AST spill of 600 gallons in 2020
Police 3rd Precinct	No	No	NA	
Motor Pool	No	No	NA	
Langan Park Fueling Station	No	Yes	Yes	Release impacted 12M Creek resulting in a Clean Water Act Violation
Hurtel Street	No	No	N/A	
Public Safety Complex	No	No	NA	
The Wave	Yes (2014)	Yes (1993)	Yes	Remediation is complete for the 2014 release. Remediation is complete for the 1993 release.

SPCC Plan Contents

- Identify oil storage and use locations
- Designates responsibilities for implementation
- Establish spill prevention and response procedures

Facility	SPCC Plan Location	Facility Contact
Municipal Garage / Public Works	Office	Charles Sumrall (251) 208-2995
Police 3rd Precinct	Police Office	Charles Sumrall (251) 208-2995
Langan Park Fueling Station	Parks Office	Charles Sumrall (251) 208-2995
Public Safety Complex	Police Office	Charles Sumrall (251) 208-2995
Hurtel Street	Office	Charles Sumrall (251) 208-2995
Fire Station 7	Fire Station Office	Charles Sumrall (251) 208-2995

SPILL CONTROL & RESPONSE

- **SPILL PREVENTION**
- **SPILL RESPONSE**
- **SPILL CLEANUP**



SPILL PREVENTION

- City facilities which store or use in bulk any oil-based product(s) and City vehicles **must** have oil spill containment structures and/or equipment to prevent oil spills and contaminated runoff from reaching the following:
 - *Storm drains*
 - *Streams*
 - *Ditches*
 - *Rivers, bays, etc.*
 - *Other navigable waters*



UTILIZE FOR OIL CONTAINMENT

OIL-DRI



SPILL PADS



DIRT / DIRT BERM



OIL BOOMS



SPILL CONTAINMENT KIT

- Spill containment kits are located at all fueling stations
- Each kit should contain oil rags, boom, or Oil-Dri

SPILL CONTAINMENT KIT



SPILL PREVENTION PROCEDURES

- Locate and inspect spill response material prior to checking or filling oil filled equipment or vehicle
- Visually inspect oil filled equipment or vehicle prior to use

WHAT IF A SPILL OCCURS?

SPILL RESPONSE

- **STOP** the source of the spill (on-site personnel):
 - Have situational awareness in identifying spills/leaks from vehicles.
 - Do not stop a leaking vehicle in front of storm water inlets or a waterbody
 - Turn off equipment or vehicle
 - Do not keep vehicle in operation, stop immediately upon discovery

WHAT IF A SPILL OCCURS?

SPILL RESPONSE

- **CONTAIN** and **PREVENT** the spill from spreading to the storm water system by utilizing:
 - Spill Pads
 - Oil-Dri
 - Sand, Dirt, Leaves
 - Booms/Wattles
 - Dirt berms
- Use dry clean-up methods like sweeping or shoveling.
Never hose down a spill or leak
- You are the first line of response! Use spill response equipment that are in each spill containment kit to try and contain as much as possible

WHAT IF A SPILL OCCURS?

SPILL RESPONSE

- **NOTIFY** the appropriate personnel
 - Your Immediate Supervisor
 - Spill Crew Supervisor, Angela Pompey 251-208-7530 or 251-709-0084
- Supervisor contacts Spill Crew Supervisor and calls 311
- Spill Crew Supervisor will direct cleanup response efforts and make the determination of when the site is remediated.

VISUALLY CONFIRMED CONTAMINATED SOIL

- If you visually identify potentially contaminated soil, be sure to report it to the Spill Crew Supervisor
- All contaminated soil must be excavated, transferred, and sealed in a 55 gallon drum (Spill Crew will handle)
- The area surrounding the spill must be returned to the same condition that existed prior to the spill

REPORTABLE SPILLS

- A reportable spill is defined as *any spill that reaches the storm water system or any waters of the state*
- City of Mobile spill personnel are responsible for cleanup- *call 311. Environmental Specialist will conduct an investigation into the incident and file report.*
- If the spill is too large for personnel to handle, an outside spill response contractor will be called

REPORTING REQUIREMENTS

- Notify Regulatory Agencies

- The following agencies will be notified if oil/fuel is discharge to a waterway
 - National Response Center (NRC)
 - U.S. Coast Guard
 - Alabama Department Of Environmental Management (ADEM)

If spill is significant in impacting a waterway, these agencies can levy costly fines to the City. **That is why prompt response to a spill is so critical** (not only in cleaning but in recognizing a spill).

ILLICIT DISCHARGE

- In short, any substance other than rainwater or ground water that enters into the storm water system
- If you witness or suspect an illicit discharge **call 311**

ILLICIT DISCHARGE

- Illicit discharge examples include the following entering into the storm drain or waterways:
 - Oil Spills
 - Grass Clippings and Litter
 - PHFs
 - Paints / solvents
 - Washing equipment in unauthorized areas
 - Cooking Grease/Oil, etc.

Illicit Discharge Example



Illicit Discharge Example



Illicit Discharge Example



Best Management Practices: Good Housekeeping



Housekeeping Activities

- Keep outdoor areas neat and organized
- Keep oil spill clean-up equipment at facility (spill containment box, Oil-Dri bags).
- **Sweep up or clean-up any residues or wastes that accumulate outdoors where they might contact stormwater or runoff (Oil-Dri)**
- Regularly pick up trash, floatables and debris.

Good Housekeeping Example



Good Housekeeping Example



Bad Housekeeping Example



Vehicle Fueling



Vehicle Fueling Instructions

- Park as close as possible to the fuel pump and do not stretch the hose
- Stay with your vehicle during fueling
- Do NOT rig the fuel pump with your fuel cap





Vehicle & Equipment Washing



Vehicle & Equipment Washing

- Only wash vehicles and equipment in authorized wash bays or racks. Never wash outdoors where wastewater discharges could flow into storm drainage system.
- Use only the cleaners and soaps provided by the wash facility. Do not substitute other cleaners.
- Clean up wash area when finished.
- Remove litter prior to washing

Waste Management



Waste Disposal

- Never use storm drains for waste disposal. Dispose of all waste according to applicable regulations.
- Always keep outdoor waste receptacle lids closed unless placing waste inside.
- If waste is found around receptacles, clean it up before the debris can be washed away
- Do not overfill outdoor waste receptacles.

CONCLUSION

- Spill Response: **Stop, Contain, Prevent, Notify**
- Spill Containment Kit at each fueling station
- Spill response equipment on each City vehicle (Spill Pads & Oil-Dri)
- Good Housekeeping Best Management Practices

QUESTIONS?



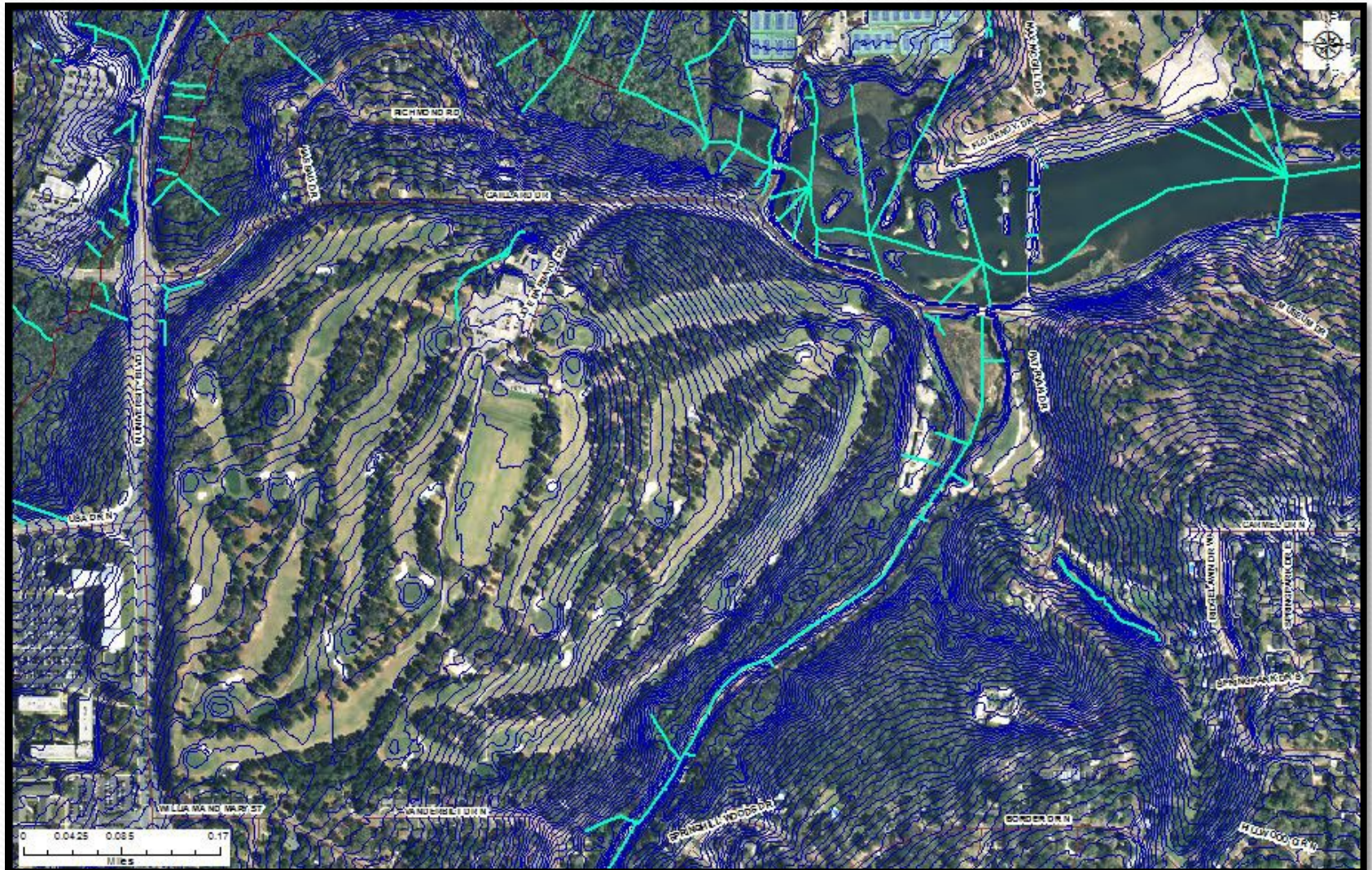
SPILL CONTROL & RESPONSE/ ILLICIT DISCHARGE DETECTION & ELIMINATION/ BEST MANAGEMENT PRACTICES



CITY OF MOBILE
1000 GALLIARD DRIVE
AZALEA CITY GOLF COURSE
PARKS DEPARTMENT
MOBILE, AL

2022 TRAINING

Azalea City Golf Course



Azalea City Golf Course

- Building for office space, clubhouse, etc.
- Golf cart storage, maintenance area, mowing equipment storage, wash pads
- PHF storage
- Two Aboveground Storage Tanks (ASTs)
 - Gasoline and Diesel Fuels

SPILL CONTROL & RESPONSE

- **SPILL PREVENTION**
- **SPILL RESPONSE**
- **SPILL CLEANUP**



SPILL PREVENTION

- City facilities which store or use in bulk any oil based product(s) and City vehicles ***must*** have oil spill containment structures and/or equipment to prevent oil spills and contaminated runoff from reaching the following:
 - *Storm drains*
 - *Streams*
 - *Ditches*
 - *Rivers, bays, etc.*
 - *Other navigable waters*



UTILIZE FOR OIL CONTAINMENT

OIL-DRI



SPILL PADS



DIRT / DIRT BERM



OIL BOOMS



SPILL CONTAINMENT KIT

- Spill containment kits are located at all fueling stations
- Each kit should contain oil rags, boom, or Oil-Dri

SPILL CONTAINMENT KIT



SPILL PREVENTION PROCEDURES

- Locate and inspect spill response material prior to checking or filling oil filled equipment
- Visually inspect oil filled equipment prior to use
 - Ensure connections from truck to trailer is connected properly before operating vehicle. If this check is not done correctly, spill results.

WHAT IF A SPILL OCCURS?

SPILL RESPONSE

- **STOP** the source of the spill (on-site personnel):
 - Have situational awareness in identifying spills/leaks from vehicles.
 - Do not stop a leaking vehicle in front of storm water inlets or a waterbody
 - Turn off equipment
 - Do not keep vehicle in operation, stop immediately upon discovery

WHAT IF A SPILL OCCURS?

SPILL RESPONSE

- **CONTAIN** and **PREVENT** the spill from spreading to the storm water system by utilizing:
 - Spill Pads
 - Oil-Dri
 - Sand, Dirt, Leaves
 - Booms/Wattles
 - Dirt berms
- Use dry clean-up methods like sweeping or shoveling.
Never hose down a spill or leak
- You are the first line of response! Use spill response equipment that are in each vehicle to try and contain as much as possible

WHAT IF A SPILL OCCURS?

SPILL RESPONSE

- **NOTIFY** the appropriate personnel
 - Your Immediate Supervisor
 - Spill Crew Supervisor, Angela Pompey 251-208-7530 or 251-709-0084
- Supervisor contacts Spill Crew Supervisor and calls 311
- Spill Crew Supervisor will direct cleanup response efforts and make the determination of when the site is remediated.



Spill Response SOP

- Updated May 2021
- **Questions regarding SOP?**

VISUALLY CONFIRMED CONTAMINATED SOIL

- If you visually identify potentially contaminated soil, be sure to report it to the Spill Crew Supervisor
- All contaminated soil must be excavated, transferred, and sealed in a 55 gallon drum (Spill Crew will handle)
- The area surrounding the spill must be returned to the same condition that existed prior to the spill

REPORTABLE SPILLS

- A reportable spill is defined as *any spill that reaches the storm water system or any waters of the state*
- City of Mobile spill personnel are responsible for cleanup- *call 311. Environmental Specialist will conduct an investigation into the incident and file report.*
- If the spill is too large for personnel to handle, an outside spill response contractor will be called

REPORTING REQUIREMENTS

- Notify Regulatory Agencies

- The following agencies will be notified if oil/fuel is discharge to a waterway
 - National Response Center (NRC)
 - U.S. Coast Guard
 - Alabama Department Of Environmental Management (ADEM)

If spill is significant in impacting a waterway, these agencies can levy costly fines to the City. **That is why prompt response to a spill is so critical** (not only in cleaning but in recognizing a spill).

Spill Response Examples



Spill Response Examples



Spill Response Examples



Spill Response Examples



Spill Response Examples



Spill Response Examples



Spill Response Examples



Spill Response Examples



ILLICIT DISCHARGE

- In short, any substance other than rainwater or ground water that enters into the storm water system
- If you witness or suspect an illicit discharge **call 311**

ILLICIT DISCHARGE

- Illicit discharge examples include the following entering into the storm drain or waterways:
 - Oil Spills
 - Grass Clippings and Litter
 - PHFs
 - Paints / solvents
 - Washing equipment in unauthorized areas
 - Cooking Grease/Oil, etc.

Illicit Discharge Example



Illicit Discharge Example



Illicit Discharge Example



Best Management Practices: Good Housekeeping



Housekeeping Activities

- Keep outdoor areas neat and organized
- Keep oil spill clean-up equipment in vehicles/equipment (oil spill pads) and at facility (spill containment box, Oil-Dri bags, spill pads).
- Regularly pick up trash, floatables and debris.

Housekeeping Activities

- Sweep up or clean-up any residues or wastes that accumulate outdoors where they might contact stormwater or runoff (Oil-Dri)
- Sweep up or clean-up any residues or wastes that accumulate in work areas on a daily basis (Oil-Dri)
- Store drums and containers inside of secondary containment

Housekeeping Activities

- Keep lids and tops on all containers while not in use.
- All containers need to be clearly labeled.
- Put supplies and materials away, preferably indoors, when finished and by close of business.

Housekeeping Examples



PHF Storage, Use, & Spill SOP



PHF Storage, Use, & Spill SOP

- Pesticides, Herbicides, and Fertilizers shall be stored in a designated location that is dry, climate controlled, ventilated, and secure.
- SDS sheets and labels must be present.
- **A Daily Pesticide Application sheet is filled out to record treatment.**
- Applicators must have the required State training.
- **Updated in January 2020. Questions regarding SOP?**

Storm Water Good Housekeeping



Storm Water

Good Housekeeping SOP

- Do not dump liquids or materials outside. **Dispose of all wastes appropriately.**
- Updated in May 2021
- **Questions regarding SOP?**

Vehicle Fueling



Vehicle Fueling Instructions

- Park as close as possible to the fuel pump and do not stretch the hose
- Stay with your vehicle during fueling
- Spot clean small fuels leaks and drips immediately





Vehicle & Equipment Washing



Vehicle & Equipment Washing

- Only wash vehicles and equipment in authorized wash bays or racks. Never wash outdoors where waste water discharges could flow into storm drainage system.
- Use only the cleaners and soaps provided by the wash facility. Do not substitute other cleaners.
- Clean up wash area when finished.
- Remove litter prior to washing

Waste Management



Waste Disposal

- Never use storm drains for waste disposal. Dispose of all waste according to applicable regulations.
- Always keep outdoor waste receptacle lids closed unless placing waste inside.
- If waste is found around receptacles, clean it up before the debris can be washed away
- Do not overfill outdoor waste receptacles.

CONCLUSION

- Spill Response: **Stop, Contain, Prevent, Notify**
- Spill Containment Kit at each fueling station
- Spill response equipment on each City vehicle (Spill Pads & Oil-Dri)
- Spill response equipment in maintenance/storage areas (Oil-Dri)
- Good Housekeeping Best Management Practices

CONCLUSION

- **Spill Response SOP**
- PHF Storage, Application, & Spill Procedures SOP
- Storm Water Good Housekeeping SOP
- Vehicle & Equipment Washing SOP

QUESTIONS???

